



Single color laser projector predominantly based on a green Genesis TAIPAN OPSL. For applications with single-colored green laser light the BLITZ Basic laser units are still proven products which feature by their top-grade quality as well as good price-performance ratio.

Laser Source	Type:	CW analog modulated
	Typical Wavelengths	532 nm
	Beam Diameter (1/e ²) typical *:	1.8 mm (< 3 mm with LD optics)
	Beam Divergence (1/e ²) typical *:	< 1.4 mrad (< 0.7 mrad with LD optics)
	Laser class:	4
	* Specification by Coherent Inc.	

BLITZ	Specific Output Power [mW]
Basic G2 PD ¹⁾	1600
Basic G5	5000
Basic G8	8000
Basic G10	10,000
Basic dual G16	16,000
Basic dual G20	20,000

¹⁾ Pure Diode - 520 nm green diode module made by LaserAnimation



**MADE
IN
GERMANY**
used worldwide



Technical specifications subject to change without prior notice!

Scanner Unit	<p>X,Y scanner CT 6210H (Cambridge Technology) with Turbo Scan driver (LaserAnimation Technology)</p> <ul style="list-style-type: none">• Scan system speed: 40 k ILDA 8°• Aperture: 4 mm• Projection angle: 80° maximum, 50° typical• Reaction time (2° opt. step): 0.2 ms
Laser Safety	<ul style="list-style-type: none">• Scanfail safety circuit• Physical adjustable beam block• Key switch, interlock loop, emission LED
Standardized Connectors	<ul style="list-style-type: none">• AC Mains Connector: 3-pin IEC socket male• Projector Signal, analog: ILDA In D-sub 25, differential inputs• Remote: 7pin XLR (RS232, external key switch, interlock)• DMX In: 5pin XLR
Thermal	<ul style="list-style-type: none">• Max. ambient temperature: 60°C• Min. ambient temperature: - 10°C
Climate Components	<ul style="list-style-type: none">• Generously dimensioned heat sink as base for all temperature relevant components• Peltier elements for either heating and cooling• Temperature controlled low noise fans with high efficiency
Electrical Input	<ul style="list-style-type: none">• 100-120 VAC / 200-240 VAC / 50-60 Hz• Input power range: 120 -750 W maximum
Control	<ul style="list-style-type: none">• Using “LA Toolbox“ software (included) for installation on PC or Mac
Built-In Options	<ul style="list-style-type: none">• Grating module for extraordinary background effects• Laser show controller Lasergraph DSP PCB• LD optics for low divergence• Wide angle lense (fisheye) for mounting to the laser output
Compliance	CE, CDRH
Warranty	12 months after delivery



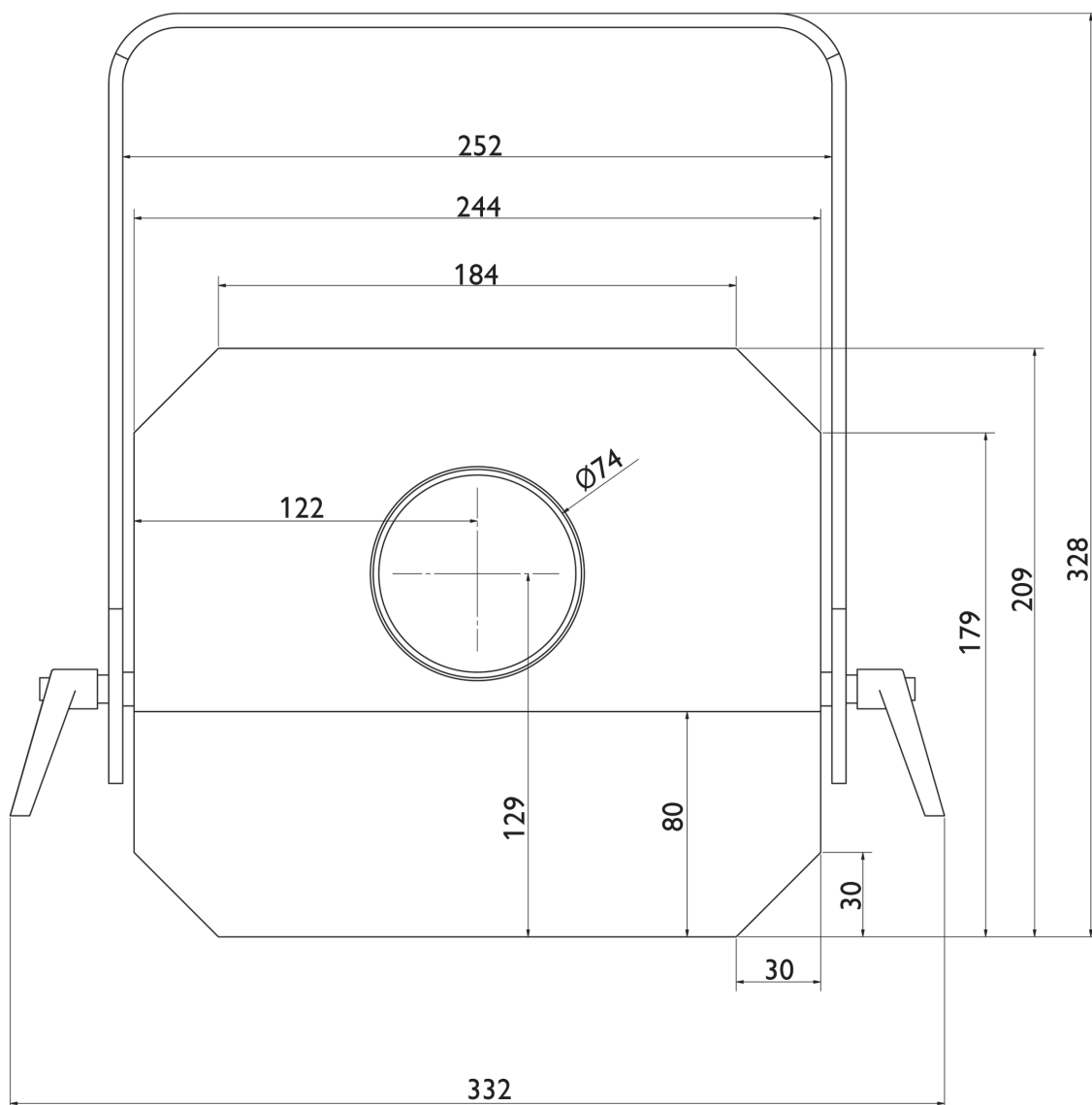
**MADE
IN
GERMANY**
used worldwide



Technical specifications subject to change without prior notice!

Physical

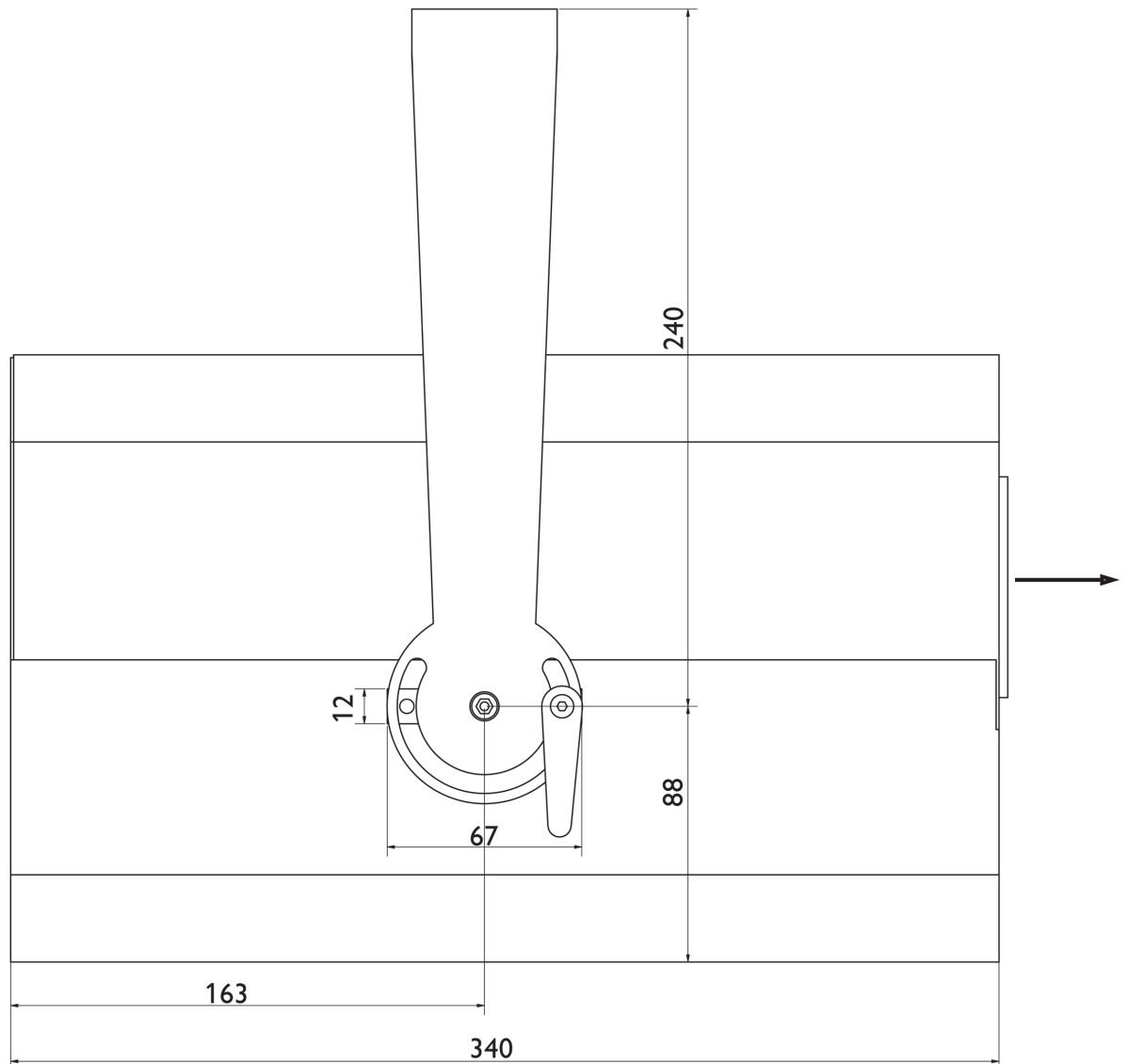
- Length: 340 mm
- Width: 245 mm
- Height: 210 mm (without yoke)
- Weight Range: Approx. 11 kg - 18 kg
- Housing: Powder coated steel plate black, dustproof
- Degree of protection: IP54



**MADE
IN
GERMANY**
used worldwide



Technical specifications subject to change without prior notice!



- Package**
- Standard: Aluminum case
 - Optional: PELI case 1620
 - Optional: bwh box no. 94205



**MADE
IN
GERMANY**
used worldwide



Technical specifications subject to change without prior notice!